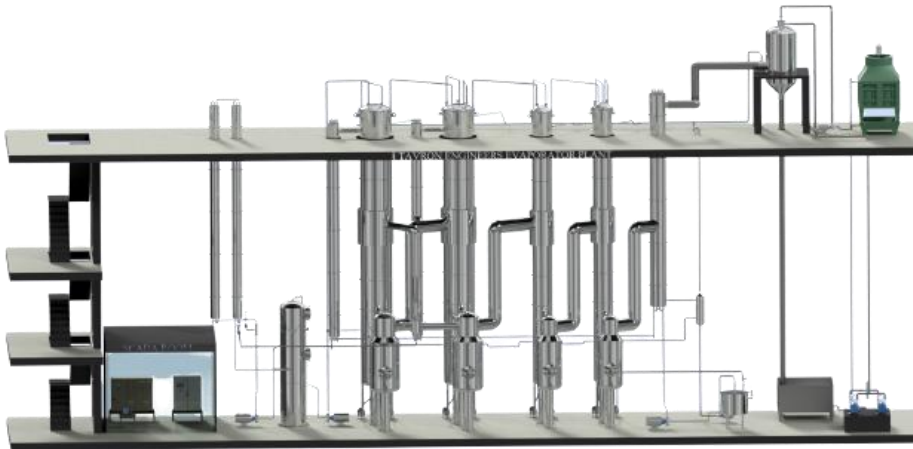




**TAVRON**  
Engineers  
...Think cool



# *Coffee-Tea Extract Evaporator* *& Spray Dryer*





## CALANDRIA



- Tubes are of A 319 or ASTM A 249.
- Shell will be of SS 304 / SS 316 / Carbon steel.
- Finished to Hygienic standard.
- Designed to achieve uniform wetting.

## TRIPLE EFFECT EVAPORATOR IN ASSEMBLY

- Multi Effect and the steam consumption is to optimum.
- TVR or MVR as optional.
- Construction with SS 304/ SS 316.



## SPRAY DRYER



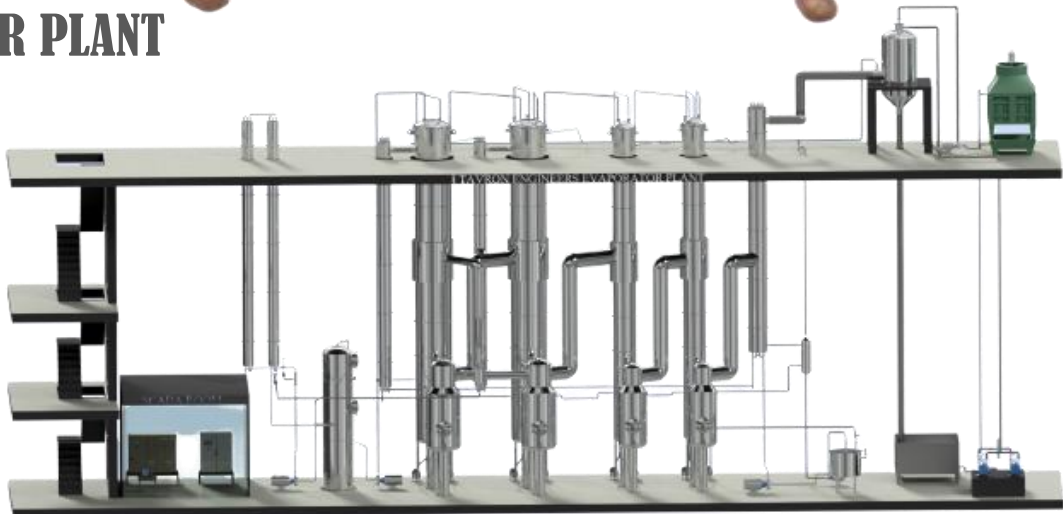
- Capacity from 5 Kg / Hr Water Evaporation to 1500 Kg / Hr Water Evaporation.
- Available with Rotary Atomizer, Nozzle and two fluid system.
- Material of construction SS 304 / SS 316.
- Second stage drying with Vibro fluid Bed Dryer.
- Three Stage Drying with Stationery Fluid Bed and vibro fluid bed.
- Available with the hot air producing system of steam, Direct or Indirect oil fired, Thermic fluid etc.
- Closed Loop Dryer is available on request for special application







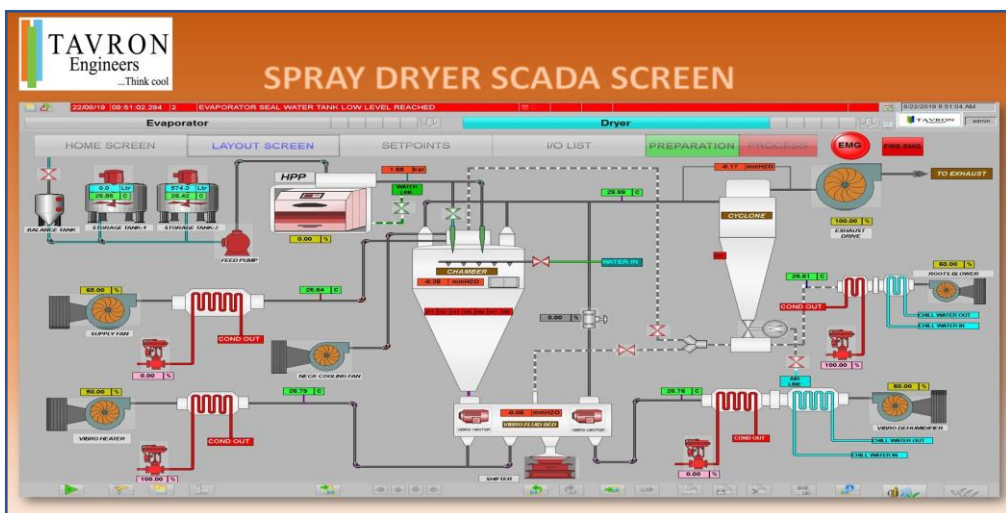
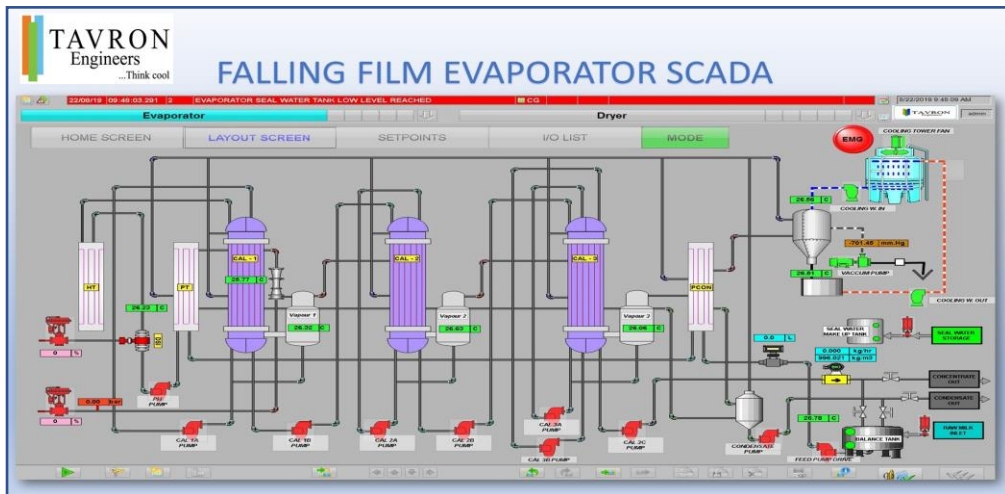
# EVAPORATOR PLANT



# SPRAY DRYER PLANT



# SCADA control



**TAVRON**  
Engineers

...Think cool



## HEAD OFFICE

### TAVRON ENGINEERS

AF-1 Aiswariyam, 25 A Redhills Road,  
Kolathur, Chennai - 600 099, India.

Tel:- +91 44 25567211.

Mobile : +91 9444015442.

Email:- [sales@tavron.net](mailto:sales@tavron.net)

Website: [www.tavron.net](http://www.tavron.net)

## FACTORY

### TAVRON ENGINEERS

38-42 Arulmurugan Nagar,  
Vichoor Post, Manali New Town,  
Chennai - 600 103.

Tel: +91 9176610727.

Email: [factory@tavron](mailto:factory@tavron)